

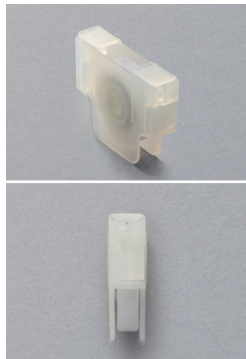
Door roller series

RoHS compliant

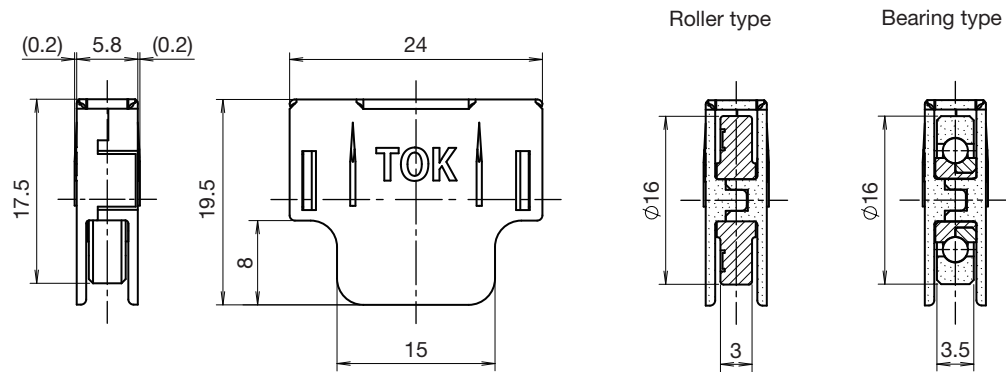
Door roller (With built-in bearing and roller) | Flat and U-groove

Model 1 Compact and thin type

(mm)

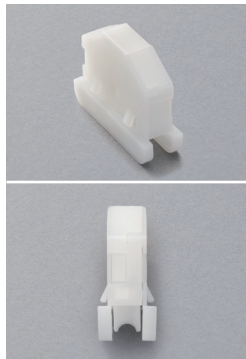


Door roller

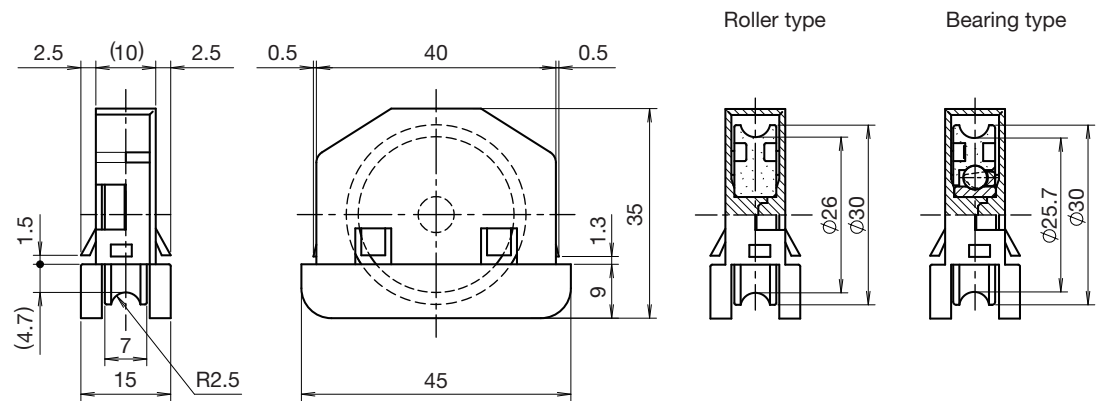


Model 2 Thin type (Easy install)

(mm)

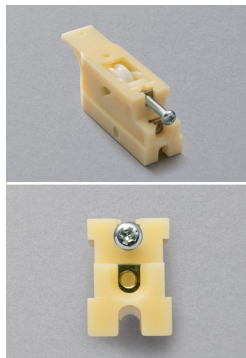


Door roller

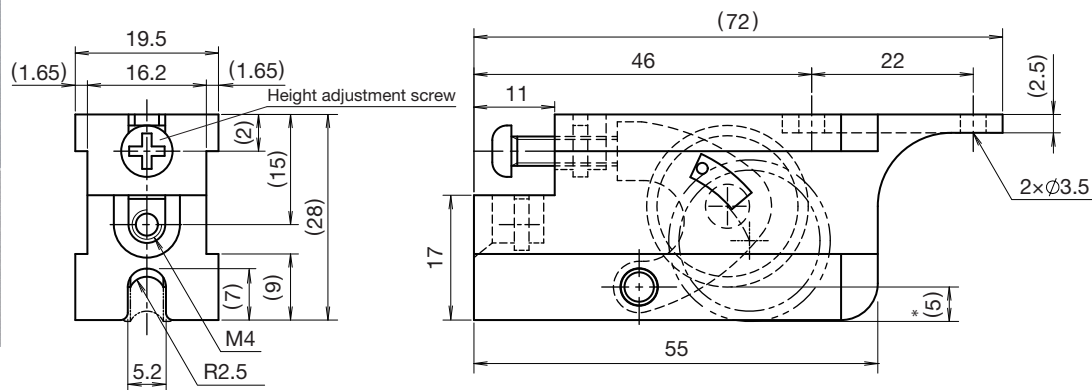


Model 3 Tire height adjustable type

(mm)



Door roller



*By turning height adjustment screw, wheel moves up or down, allowing for easy adjustment of door height. Tire height can be adjusted by approximately 5 mm.

Lineup

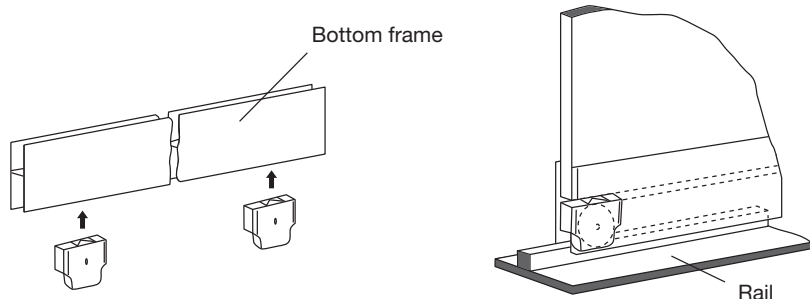
Door roller

Model	Material		Tire type		Load (N)	Weight (g)	Code	Part No.
	Outer frame	Tire	Shape	Specifications				
1	Plastic (PA)	Plastic (POM)	Flat	Roller	49	-	260068	Rollerset screen V
				Bearing (DRS-16-H4.1W0.25)	49	-	260007	Glass door wheel (PA)
2	Plastic (PE)	Plastic (PA)	U-groove	Roller	49	-	260001	TOK door wheel No.3 (A)
		Plastic (POM)		Bearing (DU-30-H6-M)	49	-	260005	TOK door wheel No.3 - B
3	Plastic (ABS)	Plastic (POM)	U-groove	Bearing (DU-22-H6-MU)	-	-	260042	Adjustable door wheel No.7

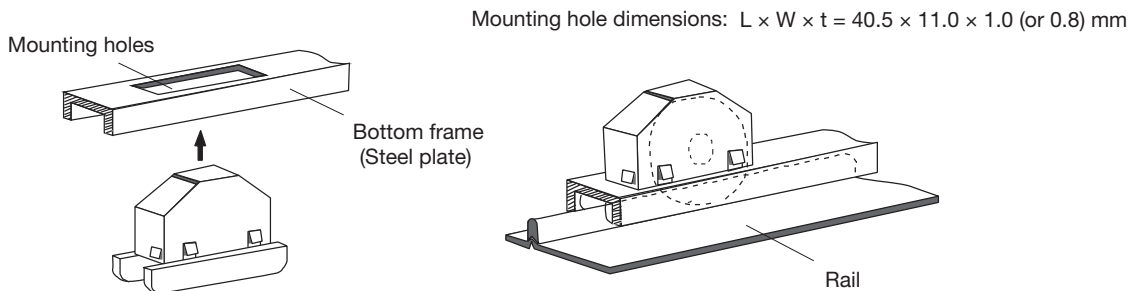
*All products are made-to-order only, but some may be in stock. Please contact your local distributor or trading company in case of urgent need.

How to mount

Model 1 Compact and thin type



Model 2 Thin type (Easy install)



Model 3 Tire height adjustable type

